



WWF

ABOUT LIFE

HK

2019



CHANGE THE WAY WE LIVE

#CONNECT2EARTH



CHAIRMAN & CEO MESSAGE



Read the recent op-ed by our conservation director David Olson, PhD



Our work to increase the awareness of nature in our community continues this summer with a new Connect2Nature exhibition at the Peter Scott Field Studies Centre, celebrating the connections built within the Mai Po community in protecting the wetlands of Inner Deep Bay since 1983.

We are connected by the migratory birds and the communities at various wetland sites and this month celebrate the 10th anniversary of the Government of Korea hosting the East Asian-Australasian Flyway Partnership Secretariat in Songdo.

Mai Po, a key location along the East Asian-Australasian Flyway and a Ramsar site since 1995, is at the very heart of our work to provide advice and expertise in wetland training and conservation education.

The opportunities across the Greater Bay Area (GBA) bring with them challenges and potential risks. WWF-Hong Kong is working closely with WWF-China and other partners on identifying both marine areas and coastal wetlands of conservation priority. Our main challenges include dealing with the loss of foraging habitats and the threats posed by noise pollution to remaining populations of Chinese white dolphin, in Hong Kong waters off Lantau and near the Soko Islands, and at Zhuhai, Macau and Jiangmen.

Our Planet, a Netflix series made in collaboration with WWF, stresses that time is not on our side. We have a narrow 10-year window to stem the massive biodiversity loss that threatens all species, including ourselves. This needs urgent collective action in the way we view development and how we live.

Let's work together to create a New Deal for Nature and People and secure a better future for our planet.

Edward M. Ho
Chairman, Executive Council
of WWF-Hong Kong

Peter Cornthwaite
Chief Executive Officer,
WWF-Hong Kong

CONTENTS

- 02 IN MEMORIAM
- 03 ISLAND HOUSE UPDATE
- 04 MANAGING HABITATS
- 05 THE OTTER SIDE OF MAI PO
- 06 MAI PO INFRASTRUCTURE UPGRADE
- 08 AN IMMERSIVE EXPERIENCE
- 10 POST-EARTH HOUR
- 12 THE FUTURE IS BRIGHT
- 13 ON THE ROAD
- 14 PROTECT OUR WETLANDS
- 16 SUSTAINABLE SHUI HAU
- 18 PROTECT OUR COUNTRY PARKS
- 20 IN SUSTAINABLE FASHION
- 21 GET INVOLVED!

ABOUT LIFE

© WWF-Hong Kong. All rights reserved.

Cover : © WWF-Hong Kong
Publisher : WWF-Hong Kong
Editor : Saul Symonds
Translation : Jon Wong
Design : Metti Siu

Any reproduction in full or in part must mention the title and credit the above publisher as the copyright owner. This magazine is printed on FSC-certified paper, containing recycled materials and using vegetable oil-based inks.

IN MEMORIAM



Dr. Lew Young

It is with deep sadness that everyone at WWF and our Mai Po community mourns the passing of Dr Lew Young, a highly respected figure throughout the wetland conservation community.

During the 17 years that Lew spent with WWF as manager of Mai Po Nature Reserve (1991-2008), he made significant contributions that are still shaping the course of wetland management and bird conservation.

His pioneering spirit was instrumental in the installation of a new floating hide, allowing people to better appreciate the beauty of migratory birds at the Deep Bay mudflats. As Lew noted at the time, this simultaneously broadened the scope of our conservation work and enhanced bird monitoring.

Lew worked closely with the community around Deep Bay on projects such as the eco-fish farming scheme, demonstrating wise-use of wetlands and helping to sustain the local pond-fish industry. The establishment of a long-term research project with the Hong Kong Bird Ringing Group allowed us to fully investigate the importance of Mai Po's reedbeds for migratory birds.

He dedicated himself to preserving the Mai Po marshes, working with the government to establish the Mai Po and Inner Deep Bay Ramsar Site, leading the Mai Po team to establish it as a key demonstration site of wetland conservation along the East Asian-Australasian Flyway.

Lew's commitment to conservation continues to serve as an inspiration for all of us.



LET'S GET SUSTAINABLE

At our sustainability hub Island House, you can learn how to incorporate environmental education and sustainable living into your daily life. In addition to year-round guided eco visits around the historic building and surrounding grounds, we hold a number of fun fiestas that put sustainable living at your fingertips.

At these events, you will find film screenings, upcycling activities and green markets with eco-friendly products and snacks. Come visit us with your family and friends and learn how to reduce your ecological footprint.



Upcoming events
at Island House

Island House
Festival

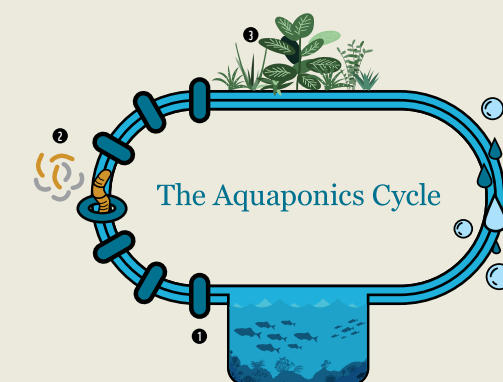
19-20 October
7-8 December

Big African Animals
Fiesta

13-14 July

Change the Way
You Live Fiesta

10-11 August



At Island House you will discover fun and unique ways to become more sustainable, such as our aquaponics system, which combines aquaculture with hydroponics.

- 1 Fish converts feed into growth and produces excrement with large amount of ammonia.
- 2 Worms break down the fish waste and microbes such as the nitrifying bacteria convert ammonia into nitrite and nitrate.
- 3 Plants use the nitrate and other mineralised materials as nutrients to grow.
- 4 Water cleaned up by the plants returns to the fish tank.



Book now!



MANAGING HABITATS



Since 1990, over 5,000 wetland managers from government departments and NGOs in countries along the East Asian-Australasian Flyway, particularly China, have attended our professional wetland management courses which use Mai Po Nature Reserve as a best-in-class example for habitat management, research and monitoring, and environmental education.

In February, a training course was held at the Island House Conservation Studies Centre for a group of 13 wetland managers from Qinghai, Shanghai and Jiangsu. The course covered how data collected by ecological monitoring surveys and research can inform the direction of wetland habitat management decisions.

Wetland enhancement and restoration work – which involves considering issues such as the location, purpose, local ecosystem, hydrology, and habitat requirements of wildlife – was one of the major elements covered. The course also examined analysis of the potential impact on local communities. The involvement and support of local communities and government bodies, are important parts of achieving the habitat conservation goals.

If you want to enhance an area of wetland to attract waterbirds, it is important to consider issues such as the time of year they usually visit, the type and depth of water they prefer and the ways they use the wetland (e.g. for food, roost or both). When considering a pond, issues such as the shape, the slope of the bank, the proportion of the vegetated area and open water, the existence of islands, and the height of surrounding vegetation, all affect the success rate of the enhancement work.

Fion Cheung

*Assistant Manager, Flyway Planning and Training
WWF-Hong Kong
kwfcheung@wwf.org.hk*



THE OTTER SIDE OF MAI PO



“

Mai Po is home to many threatened and endangered species, some of which require unique conservation management programmes, such as the Eurasian otter. The Eurasian otter is a globally near-threatened species, and the Inner Deep Bay area is thought to be one of its few remaining enclaves in south China.

In conjunction with the AFCD and local academics, the Mai Po team recognized the need to conserve the Eurasian otter in the early 2000s, covering research on the ecology of the otter and the construction of a floating platform and otter holts in the reserve

Infrared cameras have been set up at 16 locations to investigate the distribution, habitat usage and behavioural patterns, revealing that otters use the platforms in the freshwater ponds both for resting and as a pathway.

This underscores the importance of Mai Po as one of the most biodiverse locations in Hong Kong. Our otter monitoring work will continue with collaborative research on population size and trend and distribution in Deep Bay.

Carmen Or, PhD

*Wetlands Officer, Mai Po
cor@wwf.org.hk*



Visit Mai Po this summer and experience its unique beauty firsthand

”



AN IMMERSIVE EXPERIENCE

Education has been a cornerstone of Mai Po since the early days and the refurbishment of the Mai Po Education Centre is aligned with key actions set out in the government's Biodiversity Strategy and Action Plan (BSAP). This city-level BSAP aims to translate international biodiversity goals into actions that can be implemented at a local level, in particular Aichi Biodiversity Target 1. The Education Centre's enhanced exhibition area and interactive learning will cater for students, members of the public and citizen scientists. Find out more about the exhibition, set to launch this year.



The primary focus of the exhibition will be the hidden side of Mai Po – behind its natural beauty and biodiversity are many interconnected patterns, rhythms and influences, from the microscopically small to global in scale.



Mai Po is a vibrant global hub of avian activity – a vital staging post for birds that embark on journeys along the arduous north-south migratory passage known as the East Asian – Australasian Flyway each autumn and spring.

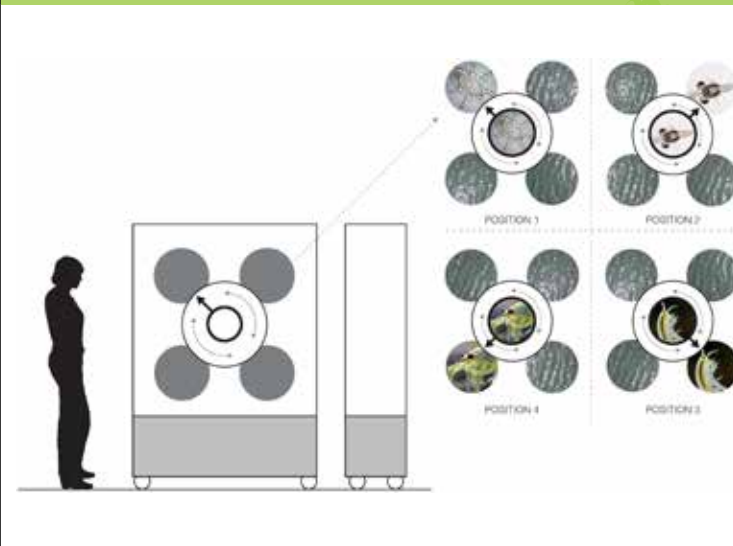


An immersive underworld of mangrove roots on the ground floor.



Discover the hidden secrets that sustain thousands of hungry and tired migratory birds.

From a shrouded underworld of mangrove roots, to the expansive above-ground vistas, Mai Po's mix of habitats are what make it so attractive to migratory visiting birds, and a host of resident wildlife.



Mai Po have over 2,050 species. Our flexible, modular exhibition can connect community groups and youth groups to nature and empower everyone to learn about wetlands and biodiversity, here in Hong Kong.



中華白海豚贊助
Chinese White Dolphin Sponsor:
scJohnson
A family company
at work for a better world

指定飲用水
Official Beverage:
Wahaha
怡保·萬能

老虎贊助
Tiger Sponsor:
Spintec

場地贊助
Venue Sponsor:
D2

特別鳴謝
Special Thanks:

Acti-Tape

KritWarm

LYCHEE & FRIENDS

OFF!

PROTREK

RUNNERS

運動筆記

VAUDE

ZANOLIFE

Thank you for joining us to protect
threatened wildlife species!

MAI PO INFRASTRUCTURE UPGRADE



The Mai Po upgrade project is funded by a HK\$347.86 million grant from the Hong Kong Jockey Club Charities Trust. The grant covers elements that make it possible for the Mai Po Community to have the facilities needed by students, teachers, and those interested in wetlands research and wetlands training. Welcoming some 24,000 students and public visitors annually, the WWF facilities are used by guided groups and other visitors. In past years, guided visitor numbers have reached a peak of 40,000 and are expected to be around 32,000 in 2023.

Peter Scott Field Studies Centre (PSFSC)

The Peter Scott rebuild, commencing this year, can enhance capacity for wetland training and research, providing space for community forums and workshops. This can bring groups together to tackle threats to biodiversity and the issues surrounding the protection of Deep Bay wetlands and the East Asian-Australasian Flyway.



Visit our
project website
to learn more

© WWF-Hong Kong



Wooden Boardwalk

An upgrade planned in 2020-21 to the existing footpath that connects Mai Po's various facilities with the construction of a wooden boardwalk includes widening to universal accessibility standards. The new boardwalk design will be a minimum width of 1.65 metres with a safety lip for wheelchairs. There will be in total six education areas with signage at points along the 1 km route, and seven passing bays for wheelchair users.

Bird Hides

Bird hides are one of the most important elements of Mai Po Nature Reserve, allowing visitors to observe the globally endangered and migratory birds that pass through the reserve without causing disturbance. The two proposed tower hides will provide opportunities for our Mai Po community to observe the reserve's bird community and connect to nature. These will be built in 2020 and 2021.



POST-EARTH HOUR

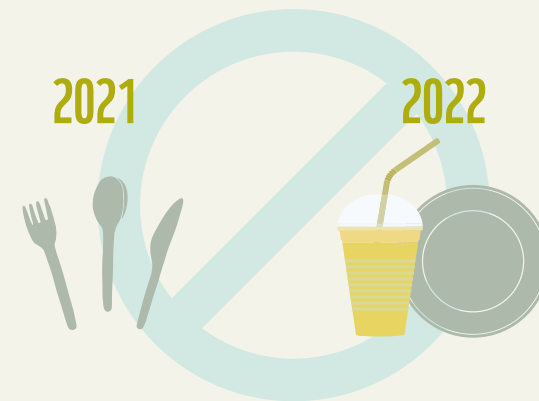
Let's Get Talking...

"Earth Hour 2019 might have finished, but the conversation continues as we kick-off a series of Change the Way We Live programmes and turn our attention towards eliminating unnecessary single-use plastics, sustainable consumption, and a reduction in our Ecological Footprint. We ask everyone across Hong Kong to #connect2earth and get involved in talking about the degradation of habitats and the urgent need to safeguard the diversity and ecological integrity of our planet.



About Eliminating Single-use Plastics...

Results of a survey completed by WWF earlier this year reveal that nearly 80% of respondents support regulation of single-use plastic tableware in the F&B industry. The survey was undertaken in support of our call on the government to regulate single-use plastics in the F&B industry, by setting a timeline for phasing out all single-use plastic tableware after 2021 and banning polystyrene tableware by 2022. With only 13% of plastics in Hong Kong recycled, and dinnerware constituting about 10% of disposed plastics waste, it is imperative that we turn our attention towards stopping marine plastic pollution.



Discover more



Promoting Sustainable Consumption...

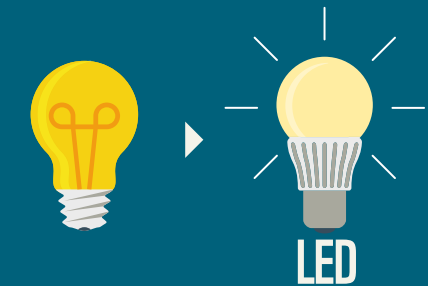
Care for our planet and spread the message of sustainable living to your family, friends and work colleagues with the Green Living WhatsApp sticker pack created together with eco cartoonist Rohan Chakravarty. They are a whimsical, yet timely reminder, of the small changes we can all make in our daily lives to avoid over-consumption of natural resources, one day at a time. These green living stickers cover the four areas that contribute most significantly to our Ecological Footprint: food, transport, clothing and electricity.



Download the sticker pack

and Reducing Our Ecological Footprint.

If everyone led the lifestyle of Hong Kongers, 4.2 Earths would be required to fulfil our resource needs, a significant increase from the 2016 figure of 3.9 Earths. Our city's Ecological Footprint is the second worst per-capita in the Asia-Pacific region and the tenth worst globally. For Hong Kong to become a more sustainable city and to tackle overconsumption problems, we need to seriously address overconsumption, improve energy efficiency, increase our use of renewables, support green buildings, and switch to LED lighting. It is time for everyone – policy makers, finance, businesses and individuals – to take sustainability into consideration to make informed decisions on financial investment and in business operations.



THE FUTURE IS BRIGHT



Learn more about
Earth Hour



Everbright International believes in the power of youth to shape sustainable development in future.

Everbright International Environmental Protection Charitable Foundation, lead sponsor at Earth Hour for six years running, is deeply committed to environmental protection, and also devoted to supporting activities that call public attention to Changing the Way We Live through the proactive adoption of a sustainable lifestyle. Commenting on the company's attitude towards environmental protection and education, Ms Arlene Wong, Chief Communications Officer of Everbright International, said:

"As the world's largest environmental protection campaign, Earth Hour has gained huge influence across the world, raising public awareness of environmental protection issues, such as recycling, energy conservation, and utilisation of renewable energy. The campaign provides a good platform for individuals and organisations to explore simple ways to reduce their ecological footprint and move towards a sustainable lifestyle."

Ms Wong added: "Since Everbright International forayed into the environmental protection industry in 2003, we have firmly believed that we should strive to deliver high-quality environmental products and services to generate good economic and social returns. Our environmental products and services have helped improve the quality of the local environment. We have also opened up our operating environmental protection projects for public visits, which enhances the local communities' awareness relating to ecological and environmental protection. We have a number of projects recognised as hubs for environmental education, environmental science, circular economic development and industrial tourism, at municipal, provincial and national levels."

ON THE ROAD

Our education outreach programme hit the road with a new electric vehicle ahead of Earth Hour 2019 to demonstrate sustainable living on school campuses. School and community groups can book the Change the Way We Live education team, sponsored by Everbright International, to visit them through August.

The programmes cover biodiversity, plastic pollution and renewable energy. Electric vehicles are part of our drive to integrate education for sustainable development into school curriculums and teach kids how easy it is to introduce sustainable habits into their daily lives.

The use of electric vehicles at our centre events and supporter activities is part of WWF-Hong Kong's commitment to high environmental standards in every aspect of our operations.

The electrification of our fleet is to be extended to our ocean centre at Hoi Ha Wan and our wetlands centre at Mai Po, and we will continue to replace internal combustion engine vehicles, with cleaner green electric vehicles. EVs offer lower and potentially CO2-free transport. Their rapid adoption is being driven by evolutions in technology and also through government policy.

Book a school
activity now



Read more



Read more



多謝支持地球一小時2019
THANK YOU FOR SUPPORTING
EARTH HOUR 2019



Thank you for joining hands to preserve the earth's
natural resources and promote the use of renewable energy.

PROTECT OUR WETLANDS

Nam Sang Wai, near to the Mai Po and Inner Deep Bay wetlands, is a biodiversity hotspot and important stopover for migratory birds. But this area faces threats, and over the course of three decades, developers have proposed building a golf course and residential units. Development would cause unacceptable loss of wetlands and ecological function to the area.

WWF supports maintaining important buffer areas surrounding the wetlands of Inner Deep Bay and improving the protection and habitat management of wise use areas. The proposed 28 residential towers, with a height of 19-25 stories, would lead to a net loss of at least 10 hectares of wetland and a decrease in wildlife species in the area. We call on the government to establish a conservation trust to safeguard ecologically important lands and ensure “no-net-loss of wetlands” in Nam Sang Wai.

Great Cormorant

Proposed high-rises at Nam Sang Wai would cause light pollution levels that adversely affect roosting patterns. Developers proposed a greater buffer distance between residential blocks and the cormorants main resting area, but there is no scientific proof of the success of this method.



Hong Kong Bent-winged Firefly

First discovered in Hong Kong in 2010, this insect is sensitive to light disturbance, which can affect its breeding success. Developers proposed a new tower design to prevent artificial lights from pointing towards the ground, but there is no scientific proof of the success of this method.



Search Investment Group

Continues to support WWF-Hong Kong in its work
to protect and improve the environment
for a sustainable future.



A member of Search Investment Group



GAUGING CLAMS

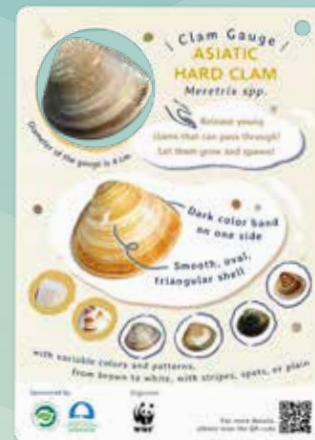
To raise awareness of best sustainable practices for recreational clam digging at areas like Shui Hau, and to preserve the area's high ecological value, WWF-Hong Kong's ocean conservation team has developed a series of gauges.

Clam gauges set a minimum size for harvested clams. They are an effective interim conservation measure and are simple to use. If a clam is small enough to pass through the hole, it's too young to harvest. By limiting the size of clams being harvested, clam gauges protect the young clams that are essential for the continued growth of the population. The gauges also contain essential information on identifying different clam species by their shape and markings.

Gauges have been used to regulate clam harvesting in other countries and preventing the exploitation of marine resources. Our team has identified five common species in Hong Kong and developed a clam gauge for each. These are the first of their kind in Hong Kong, and each one includes useful information and advice on clam digging.

If you would like to learn more about the long-term sustainable use of coastal resources, you can join one of our free public programmes held from now until October 2019. Find out more on the QR code below!

Read more



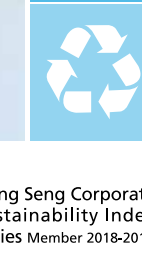
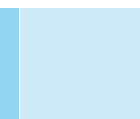
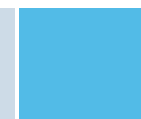
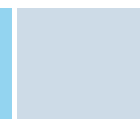
Building a sustainable community for our future generations

"Building for Tomorrow" has been the mission for The Wharf Group, with businesses being conducted to foster the long term development of the society.

Together with our staff and business associates, we are committed to building a sustainable community for our future generations by nurturing the youth, supporting the needy, promoting art and culture and enabling a greener future through our Business-in-Community initiatives.

Our flagship project, Project *WeCan*, adopts a unique model by pairing each sponsor with an underprivileged secondary school to encourage cross-sector collaboration. It is widely recognised by the society. Currently, Project *WeCan* is supported by 69 partners, with 76 schools participating, benefitting about 66,000 students.

The Group continued to be selected as a Constituent Member of "Hang Seng Corporate Sustainability Index" in 2018, an index that covers the top 30 corporate sustainability leaders in Hong Kong. The Group has also been awarded "CSR Index Plus Mark" by Hong Kong Quality Assurance Agency, in recognition of its continuous effort in corporate social responsibility.



PROTECT OUR COUNTRYPARKS

Hong Kong's incredible country park system, covering 40% of the city's land area, comprises scenic hills, woodlands, reservoirs and coastlines across the territory, with a vast range of biodiversity, making them an invaluable resource for recreation and educational purposes.

The Hong Kong government is proposing to enhance their recreational and educational potential through the construction and upgrade of facilities, museums, glamping sites, tree-top adventures, and eco lodges.

WWF-Hong Kong believes the government should align the management strategy of country parks and special areas with those used in national parks across China; conduct an assessment on pressure on local biodiversity and balance this with the release of education and recreation potential; practice wise use zoning of country parks and special areas; and ensure training and accreditation of eco-guides and oversight on operators.

WWF supports the government's overall objective to enhance the recreation and education potential of country parks, making them accessible to the community, while ensuring to conserve country parks biodiversity and special areas of scientific interest.

ENRICH PEOPLE'S LIVES ENRICH YOUR LIVES 點滴奉獻 豐富人生

Founded in 1895, Jebson is a privately-held marketing, distribution and investment organisation established in Greater China. It partners with leading brand companies to bring a wide array of quality products to Greater China while driving success for its people and business partners, protecting the environment and serving the communities in which it operates.

With clear vision and commitment to corporate social responsibility (CSR), Jebson is determined to integrate economic, social and environmental considerations into organisational strategies and operations. The Group's main goals are to distribute quality products and services to customers, sustain business growth, and improve the environment and well-being of the local communities. People are Jebson's important assets, hence special care is placed on employees' ethical behaviour, values and quality of life. The Group believes CSR is an imperative and win-win solution for sustainable growth, in addition to contributing to environmental and social quality.

創立於1895年，捷成為一家深耕大中華地區，專注市場營銷、分銷及投資的集團企業。集團與許多領先品牌合作，致力為大中華地區帶來多樣化的優質產品與服務，協助合作夥伴以及員工取得成功，同時注重環境保護，回饋捷成業務營運所在的社區。

在明確的目標和承諾下，捷成決心通過企業社會責任（CSR）計劃，將經濟、社會和環境考量納入組織的戰略和運作中。集團的主要目標是提供優質的產品和服務給客戶，保持業務的增長，以及改善環境和社區的福祉。人力是捷成的重要資產，因此集團特別關注員工的道德行為、價值觀念和生活質量。捷成認為企業社會責任是雙贏的解決方案，除了有助於環境和社會的發展，還是可持續增長的關鍵。

A member of the Jebson Group · BEVERAGE | CONSUMER | INDUSTRIAL | MOTORS | LOGISTICS | JEBSEN CAPITAL · Mainland China | Hong Kong | Macau | Taiwan



Jebson Group 捷成集團

30/F, Lee Garden Two, 28 Yun Ping Road, Causeway Bay, Hong Kong 香港銅鑼灣，恩平道28號利園2期30樓
Tel 電話: (852) 2923 8777 Fax 傳真: (852) 2882 1399 Email 電郵: jebsoninfo@jebson.com Website 網址: www.jebson.com



IN SUSTAINABLE FASHION

CLOTHING accounts for **15%** of Hong Kong's Ecological Footprint



Making Zero Impact Fashionable, a two-year project by WWF-Hong Kong and HSBC, aims to promote and educate key industry players on fashion sustainability. Check out the figures in the infographic to discover the environmental cost behind apparel production.

Clothing accounts for 15% of Hong Kong's total Ecological Footprint. The environmental cost behind apparel production should be addressed along the entire production chain, from raw material production to "last mile" transportation.

To safeguard renewable natural resources, it's essential to think twice before you buy, and when there is a need to make a purchase, choose second-hand or clothes that are made with more environmental-friendly materials such as a mix of recycled fibres with organic cotton. Support a circular economy with textile upcycling as part of your lifestyle, sending your discarded clothing to be made into new pieces rather than being sent to landfill.

Learn more



OUR CENTRES



Eco-guided visits and activities are available at our WWF visitor centres for members of the public, and community and corporate groups. Book online now.



Island House Conservation Studies Centre



Mai Po Nature Reserve



Hoi Ha Marine Life Centre



GET INVOLVED!

WWF-Hong Kong hosts an array of supporter events for the public, schools and corporate members at our three centres.

KEY EVENTS

Members of the public can join our annual events or take part in a range of eco visits, seminars and other programmes. Upcoming events include:

HOI HA WAN FESTIVAL
Jul, Sep, Nov 2019



SUMMER SCHOOL
Jul-Aug 2019



WALK FOR NATURE
2-3 Nov 2019



Book now!



GREEN FINANCE

Our primer looks at the key issues of climate change: the science; ongoing policy response; evolving technological approaches; and how these link to the financial sector.



Read more



CORPORATE

Corporate members can join eco-guided visits and activities or use our centres for conservation volunteering, like shoreline clean-ups.



Book now



Mai Po Community

HK\$347.86 million

The grant from The Hong Kong Jockey Club Charities Trust to upgrade Mai Po

16

The number of *gei wai*, the last traditionally-operated shrimp ponds, being managed by WWF

90,132

The highest number of wintering waterbirds recorded in the Mai Po Inner Deep Bay area

2,050+

The number of species recorded in Mai Po after WWF's two-year biodiversity survey

1983

The year WWF begins managing the Mai Po Nature Reserve as its first conservation project in Hong Kong



Working to sustain the natural world for people and wildlife
為人類及野生生物延續大自然
together possible wwf.org.hk

© 1986 Panda symbol WWF® "WWF" is a WWF Registered Trademark
© 1986 熊貓標誌 WWF®, "WWF" 是世界自然基金會的註冊商標
WWF-Hong Kong, 15/F Manhattan Centre, 8 Kwai Cheong Road, Kwai Chung N.T. Hong Kong
香港新界葵涌葵昌路8號萬泰中心15樓世界自然基金會香港分會
Tel 電話: (852) 2526 1011 Fax 傳真: (852) 2845 2764 Email 電郵: wwf@wwf.org.hk
Registered Name 註冊名稱: World Wide Fund For Nature Hong Kong 世界自然 (香港) 基金會
(Incorporated in Hong Kong with limited liability by guarantee 於香港註冊成立的擔保有限公司)